



Congratulations on purchasing your new RCA High Definition Small Wonder Camcorder.
Please read these instructions for quick tips on using the product.

The User Manual PDF file can also be found in the camcorder memory under the User Manuals folder.

1. Content of the box

- Small Wonder Camcorder
- AC/DC adapter
- USB cable
- AV cable
- Carrying case
- Wrist strap
- Quick Start Guide
- Owner Registration card
- Warranty leaflet

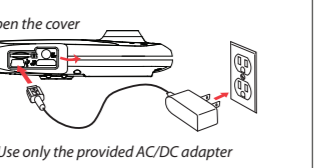
*The camcorder is waterproof. The supplied accessories are not waterproof.

2. Charging your camcorder

Please charge the battery for at least three hours before first use.

NOTE:
The unit is properly charging when you see the animated charging symbol on the Camcorder display.
If you do not see this charging symbol, follow these steps:

1. Make sure that you have the camcorder connected to the AC/DC power adapter.
2. Press and hold **MENU/⏻** to initiate charging.



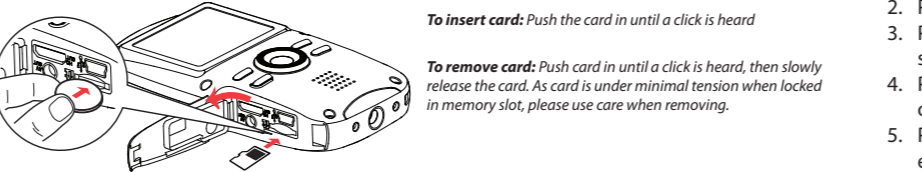
3. General controls

***To reset the camcorder (in case it is not functioning properly):**
Press and hold the On/off switch for more than 10 seconds.

Follow below steps to lift up the cover:

4. Inserting (or removing) memory card

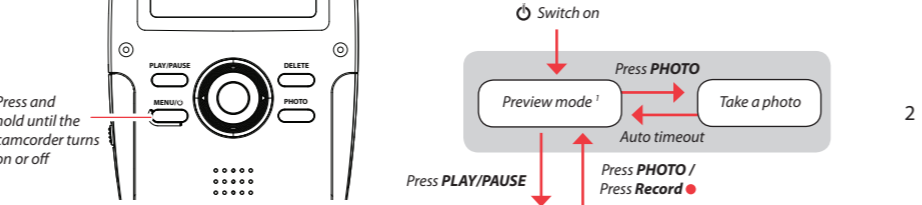
The camcorder internal memory will only permit minutes of recording time. A microSD memory card (not included) is recommended for recording.



As the memory card is small in size, it is recommended to use a **small coin** to help insert or remove it.

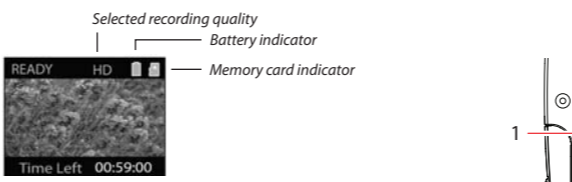
5. Turning on the camcorder

The camcorder has two operation modes (Preview and Playback). It is always in Preview mode after switched on. Refer to the diagram below for switching between modes.



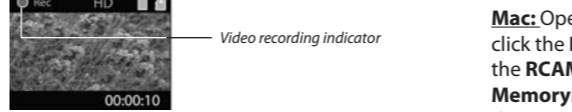
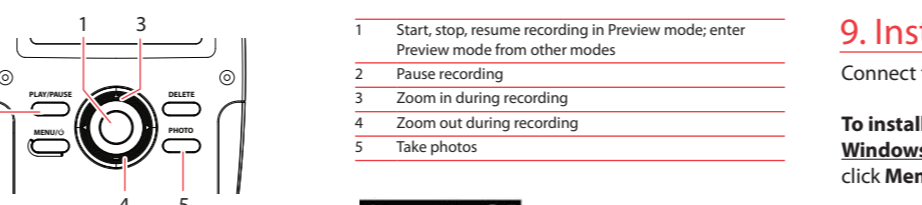
6. Selecting recording quality

1. Press **MENU/⏻** to show the camcorder menu.
2. Press + or - to select Video Quality.
3. Press **▶** to enter and press + or - to select from HD, Sports and WebQ.
4. Press **◀** to exit the current menu option.
5. Press **MENU/⏻** to save settings and exit the camcorder menu.



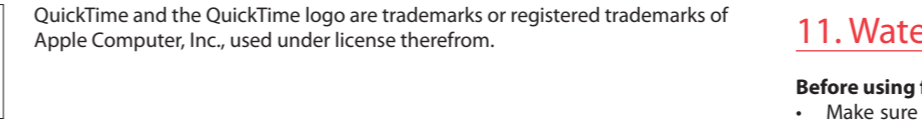
² Actual recording time and capacity will vary depending on type of video content being recorded, system requirements, and other factors.

7. Video recording and photo taking



8. Playing back or deleting recordings

- 1 Enter Playback mode to play the most recent recording; start or pause playback
- 2 Adjust volume during playback
- 3 Cue to previous recording
- 4 Cue to next recording
- 5 Enter Preview mode from Playback mode
- 6 Press to select delete one or all recordings.
- 7 Enter Preview mode from playback mode; take photos



9. Installing RCA Memory Manager application

Connect the camcorder to your PC with the provided USB cable.

To install Memory Manager 3
Windows: Open **My Computer** and double-click the drive labeled SMALLWONDER. Double-click **MemoryMgr3_Windows_Installer.exe** to start the installation.

Mac: Open the mounted volume labeled **SMALLWONDER** on the desktop. Double-click the **RCAMacInstallers.dmg** disk image in the SMALLWONDER volume. Locate the **RCAMacInstallers** volume on the desktop and Double-click on it. Double-click the **MemoryMgr3 Mac Installer** file in the RCAMacInstallers volume to start the installation. After the Memory Manager 3 installation has completed, double-click the **RCA Detective Installer** file in the **RCAMacInstallers** volume to install the RCA Detective application.

To ensure that videos can be managed and played on your PC:

- Make sure to install the included Memory Manager application.

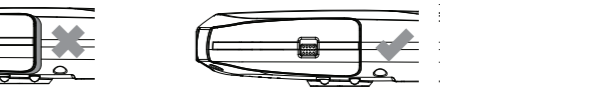
10. Learning more about the camcorder

- Read the user manual for more information on the followings:
- Using the **MENU** button to setup the camcorder (including date and time)
 - Viewing videos on TV
 - Recording videos to VHS tape or DVD
 - Connecting the camcorder to your PC
 - Tips and troubleshooting
 - Safety and warranty information

11. Waterproof precautions

Before using for outdoor activity:

- Make sure to close the card door securely without water, dust, hair or etc. between door and cabinet.
- It may result in malfunction if water, dirt or sand gets inside the camcorder.
- Closing the card door: make sure to close the card door properly and ensure no space between the cover and the cabinet before using.



Using camcorder outdoor:

- Do not open or close the card door near the sea, a lake or similar locations.
- Do not open or close the card door with wet hands or in wet environment.
- Before changing your memory card, make sure that the camcorder and your hands are completely dry.

- Do not use the camcorder in water more than 3 meters (9.8 feet) or in water for more than 1 hour consecutively or water temperature exit 0 – 40 degree C.
- Do not open or close the card door in water.
- Do not use the camera in hot water, hot spring bath or etc.
- Do not apply excessive force to the camcorder. The camcorder may be damaged if you dive into water with it.
- Do not leave the camera on sand, excess heat under sunlight may damaged the camcorder.

After using camcorder:

- Wash the camcorder immediately after used in sea or other outdoor activity, and then use cloth to clean it and leave it dry.
- To wash sand, dirt or dust off the camera, rinse it under running tap water or wash it in a bowl of fresh water for 2 to 3 minutes.
- Make sure to wipe any dirt or sand off the waterproof sealing material or its contacting surface. Dirt or sand may scratch the material or the surface, making the camcorder less resistant to water.
- Do not use any soapy water, mild detergents, alcohol or similar liquids to clean the camcorder. They may make the camcorder less resistant to water.
- The waterproof sealing material is replaceable at cost. The material should be replaced once a year to maintain the camera's water resistance.

Visit <http://store.audiovox.com> to find the best accessories for your products.

